



# **BUSINESS PAPER**

Notice is hereby given in accordance with the *Local Government Act 1993* and *Local Government (General) Regulation 2005* of the below mentioned meeting.

## **Traffic Committee Meeting**

**Wednesday, 04 May 2022**

**Commencing at 9:30 AM**

**Shellharbour Civic Centre**

---

# **AGENDA**

<b>1. Attendance.....</b>	<b>3</b>
<b>2. Acknowledgement to Country.....</b>	<b>3</b>
<b>3. Apologies / Leave of Absence.....</b>	<b>3</b>
<b>4. Confirmation of Minutes .....</b>	<b>3</b>
4.1. Traffic Committee Meeting 6 April 2022.....	3
<b>5. Addresses to Traffic Committee .....</b>	<b>3</b>
<b>6. Disclosure of Interest.....</b>	<b>3</b>
<b>7. Presentations.....</b>	<b>3</b>
<b>8. Traffic Reports.....</b>	<b>4</b>
8.1. Motorcycle Parking - John Street, Shellharbour.....	4
8.2. Edge Linemarking - Benson Avenue, Shellharbour City Centre .....	9
<b>9. General Business .....</b>	<b>14</b>
<b>10. Items for Information .....</b>	<b>14</b>
10.1. Police Matters.....	14
<b>11. Next Meeting.....</b>	<b>14</b>

## **1. Attendance**

Record of attendees to be taken at the meeting.

## **2. Acknowledgement to Country**

Shellharbour City Council acknowledges the Traditional Custodians of the Dharawal Country and recognise their continued connection to the land we meet on today. We pay our respects to Elders past, present and emerging and the contribution they make to the life of this city and this region and extend our recognition to their descendants who continue to live on country.

## **3. Apologies / Leave of Absence**

## **4. Confirmation of Minutes**

### **4.1. Traffic Committee Meeting 6 April 2022**

That the Minutes of the Traffic Committee Meeting held on 6 April 2022 as circulated be taken as read and confirmed as a correct record of proceedings.

## **5. Addresses to Traffic Committee**

## **6. Disclosure of Interest**

## **7. Presentations**

## 8. Traffic Reports

### 8.1. Motorcycle Parking - John Street, Shellharbour

#### To the Chief Executive Officer

<b>Directorate:</b>	Amenity and Assets
<b>Group:</b>	Built and Natural Environment
<b>Manager:</b>	Adam De Clouett Acting Group Manager Built and Natural Environment
<b>Author:</b>	Wayne Wilson Senior Transport Engineer

#### Summary

The purpose of this report is to seek endorsement from the Committee for the installation of three (3) designated Motorcycle parking spaces within John Street, Shellharbour in an existing wide parking bay adjacent to the Beverley Whitfield Pool (**Attachment 1**).

#### Background

Council has received a request from a member of the public for Motorcycle parking to be provided in the vicinity of Beverly Whitfield Pool (**Attachment 1**). The resident claims that they often see a single motorcycle parked in a car parking bay and they feel that designated Motorcycle parking bays may help alleviate parking issues in this area.

The Senior Transport Engineer has monitored parking in this area over a 3 week period and has noted that on each inspection, a motorcycle has utilised a single parking bay when parked along this section of John Street.

A wide car parking space approximately 3.7 metres wide has been identified in the attach sketch adjacent to Beverly Whitfield Pool that could be marked for three (3) Motorcycle parking spaces, each being 1.2 metres x 2.5 metres in dimension. A standard Motorcycle parking bay is normally 0.8 x 2.5 metres. As shown in **Attachment 2**.

**Financial / Resources Implications**

If approved, works will be carried out and funded by Council

**Legal and Policy Implications**

Nil

**Public / Social Impact**

- Potential increase in parking

**Link to Community Strategic Plan**

This report supports the following objectives and strategies of the Community Strategic Plan:

<b>Objective:</b>	<b>2.3</b>	<b>A city that is connected through places and spaces</b>
<b>Strategy:</b>	2.3.3	Provide and promote a sustainable, safe and connected transport network
	2.3.4	Facilitate the development of the built environment to meet community needs

**Consultations**

The following consultations were undertaken:

**Internal**

- Acting Manager Floodplain and Transport
- Manager Compliance and Regulation
- Aquatics and Recreation Coordinator

**External**

Nil

**Political Donations Disclosure**

Not Applicable

**Committee Recommendation**

**That Council approve the modification to the existing parking to provide 3 X Motorcycle Parking Only spaces on John Street, Shellharbour as shown in Attachment 2.**

**Approved By**

<b>Approved for Council's Consideration:</b>	<b>Adam De Clouett</b>
<b>Date of Meeting:</b>	<b>4 May 2022</b>

**Attachments**

1. Locality Plan
2. Signage and Linemarking Plan

**Attachment 1 - Locality Plan**



**Attachment 2 - Signage and Linemarking Plan**





## 8.2. Edge Linemarking - Benson Avenue, Shellharbour City Centre

### To the Chief Executive Officer

<b>Directorate:</b>	Amenity and Assets
<b>Group:</b>	Built and Natural Environment
<b>Manager:</b>	Adam De Clouett Acting Group Manager Built and Natural Environment
<b>Author:</b>	Tyson Perry Acting Manager Floodplain and Transport

### Summary

The purpose of this report is to seek endorsement from the Committee for the installation of edge linemarking at Benson Avenue, Shellharbour City Centre (**Attachment 1**).

### Background

During the April 2022 Traffic Committee, representatives raised concerns of parked vehicles on Benson Avenue relating to a lack of delineation between parked vehicles and the travel lane. Council Officers have investigated the concerns raised and have proposed the installation of edge linemarking as shown in **Attachment 2**.

The removal of on-street parking on Benson Avenue was also considered as part of this investigation however, on balance, the removal of on-street parking was not supported at this point in time due to the value and demand of parking within the City Centre.

### Financial / Resources Implications

If approved, works will be carried out and funded by Council.

### Legal and Policy Implications

Nil

**Public / Social Impact**

Greater delineation of parking and travel lanes.

**Link to Community Strategic Plan**

This report supports the following objectives and strategies of the Community Strategic Plan:

<b>Objective:</b>	<b>2.3</b>	<b>A city that is connected through places and spaces</b>
<b>Strategy:</b>	2.3.3	Provide and promote a sustainable, safe and connected transport network

**Consultations**

The following consultations were undertaken:

**Internal**

- Senior Transport Engineer
- Manager Compliance and Regulation
- Road Safety Officer

**External**

Nil

**Political Donations Disclosure**

Not Applicable

**Committee Recommendation**

**That Council approve the installation of edge linemarking at Benson Avenue, Shellharbour City Centre as shown in Attachment 2.**

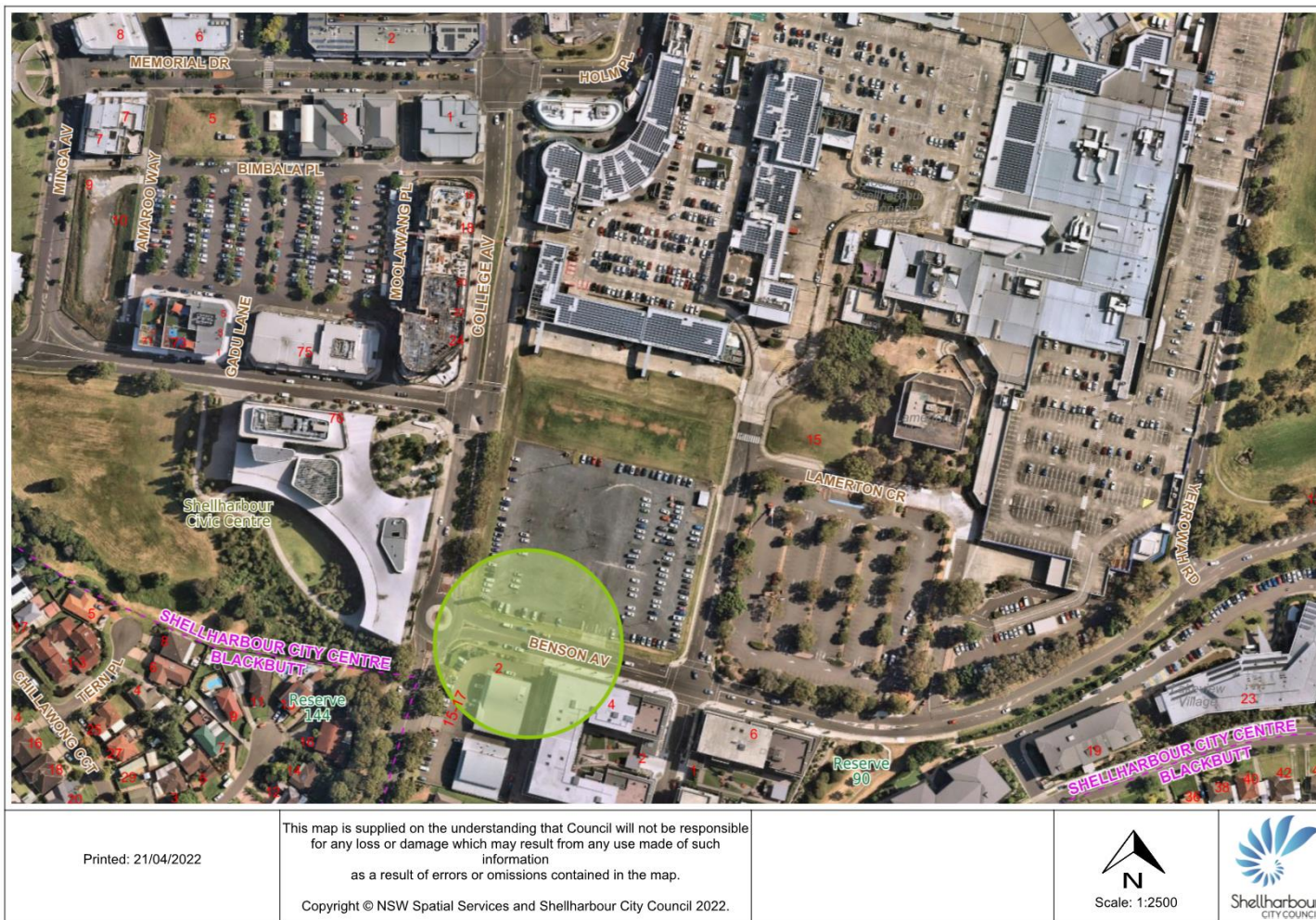
**Approved By**

<b>Approved for Council's Consideration:</b>	<b>Adam De Clouett</b>
<b>Date of Meeting:</b>	<b>4 May 2022</b>

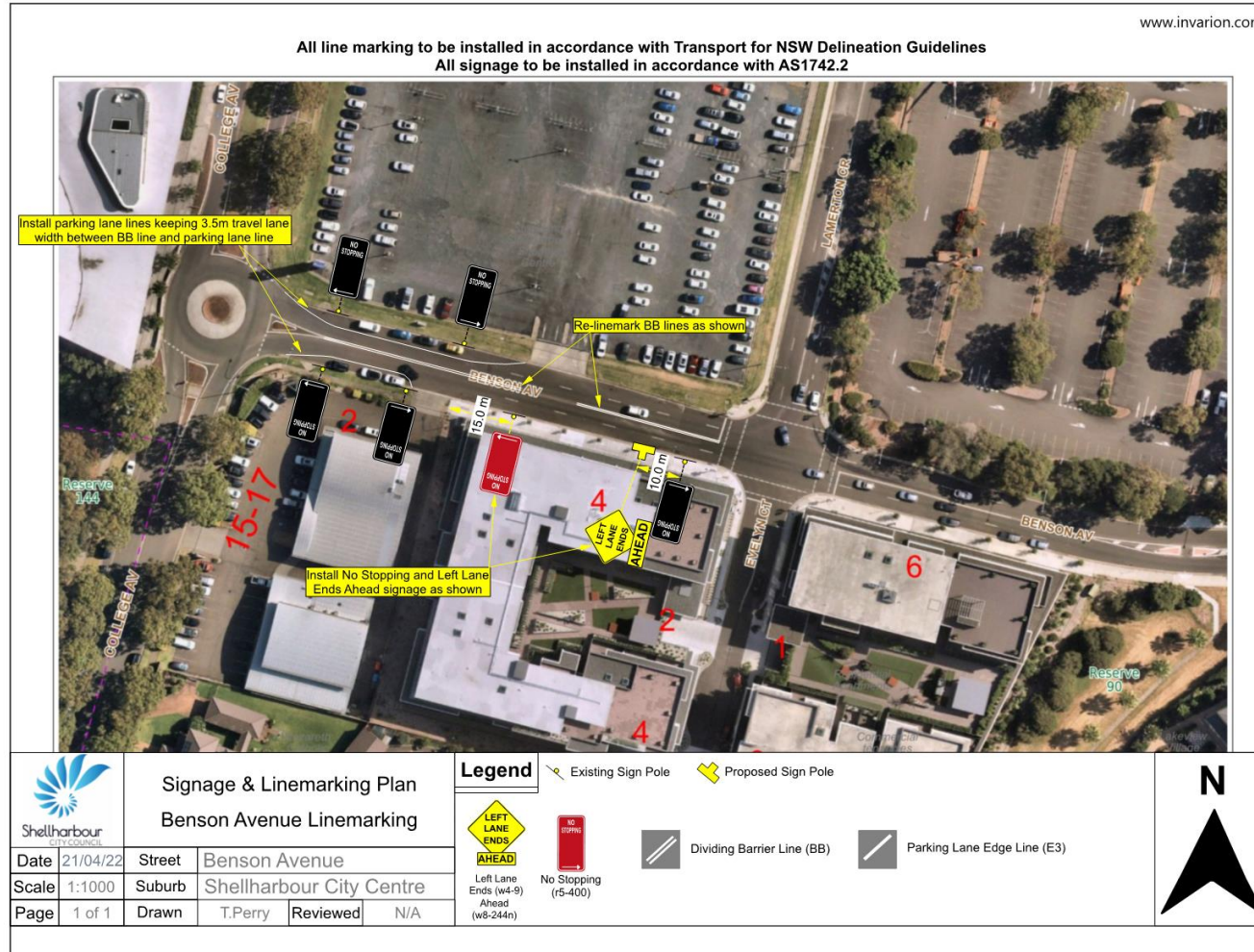
**Attachments**

1. Locality Plan
2. Signage and Linemarking Plan

Attachment 1 - Locality Plan



Attachment 2 - Signage and Linemarking Plan



## 9. General Business

## 10. Items for Information

### 10.1. Police Matters

#### Item for Information

Can Police please note the following items, raised by the community for potential future patrols:

<b>No. of Reports</b>	<b>Street/Location</b>	<b>Suburb</b>	<b>Report Type</b>
1	Shell Cove Boat Harbour Carpark - Harbour Boulevard	Shell Cove	Speeding and hooning in the car park

#### Approved By

<b>Approved for Council's Consideration:</b>	<b>Adam De Clouett</b>
<b>Date of Meeting:</b>	<b>4 May 2022</b>

#### Attachments

Nil

## 11. Next Meeting

Date: 1 June 2022